

## IIS, FTP Server and Windows

### The Objective:

- To setup, configure and test FTP server.

### Requirement:

- Any version of the Windows 2000 Server.
- FTP Windows's component.
- Internet Information Services, IIS.

### Steps:

Firstly, make sure the **FTP Publishing Service** and **IIS Admin Service** are up. Use Windows 2000 **Services** snap in to verify this as shown below. Here we can confirm that the components are installed, started and ready to be configured.

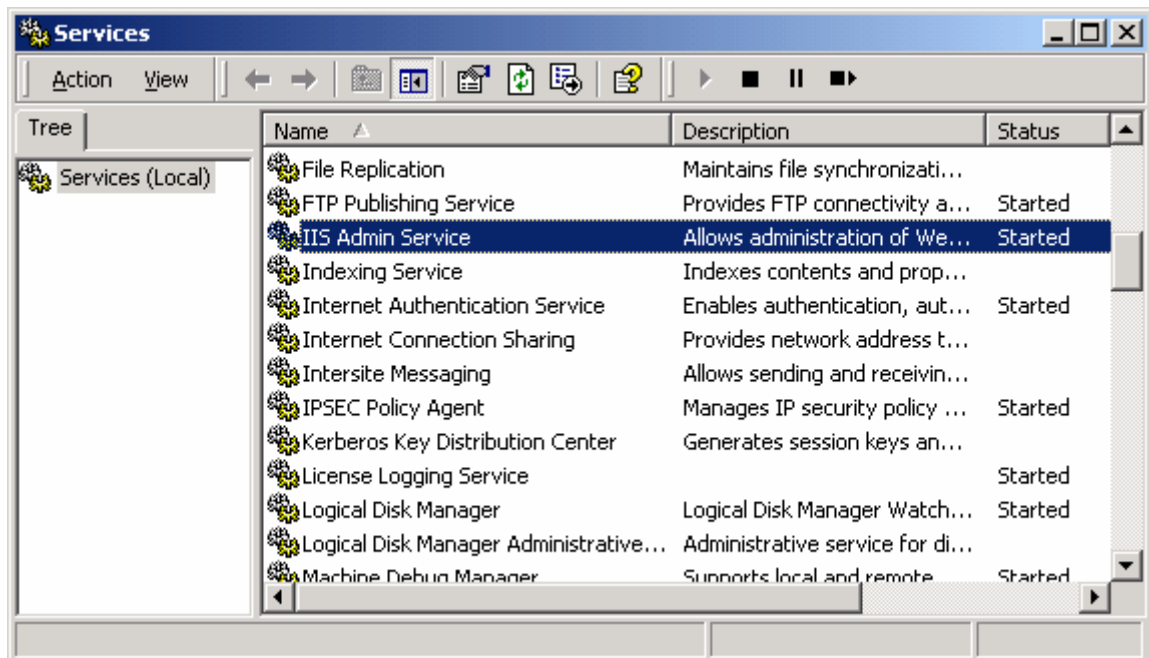


Figure 1: The Services snap-in, verifying the IIS Admin and FTP Publishing Services status.

Next, open the **Internet Information Services** snap-in. Click **Start** → **Program** → **Administrative Tools** → **Internet Services Manager**.

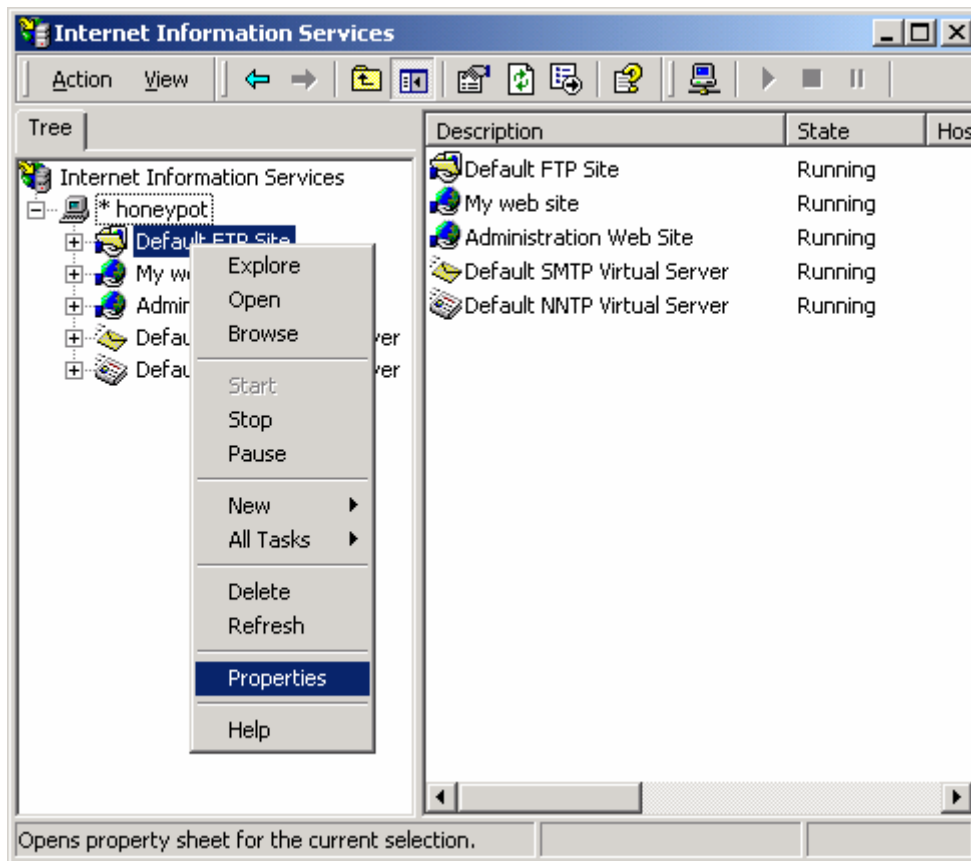


Figure 2: Invoking the FTP properties page through context menu.

Select and right click the **Default FTP Site** and select the **Properties** context menu. The following dialog box appears. Select your server IP Address, replace the **Unassigned** in the **IP Address** list box as shown below (your server IP address should be different). The default port for FTP is 21, you can change the default port, but the user need to know the port when connecting to this FTP server and make sure the port is not used by other services.

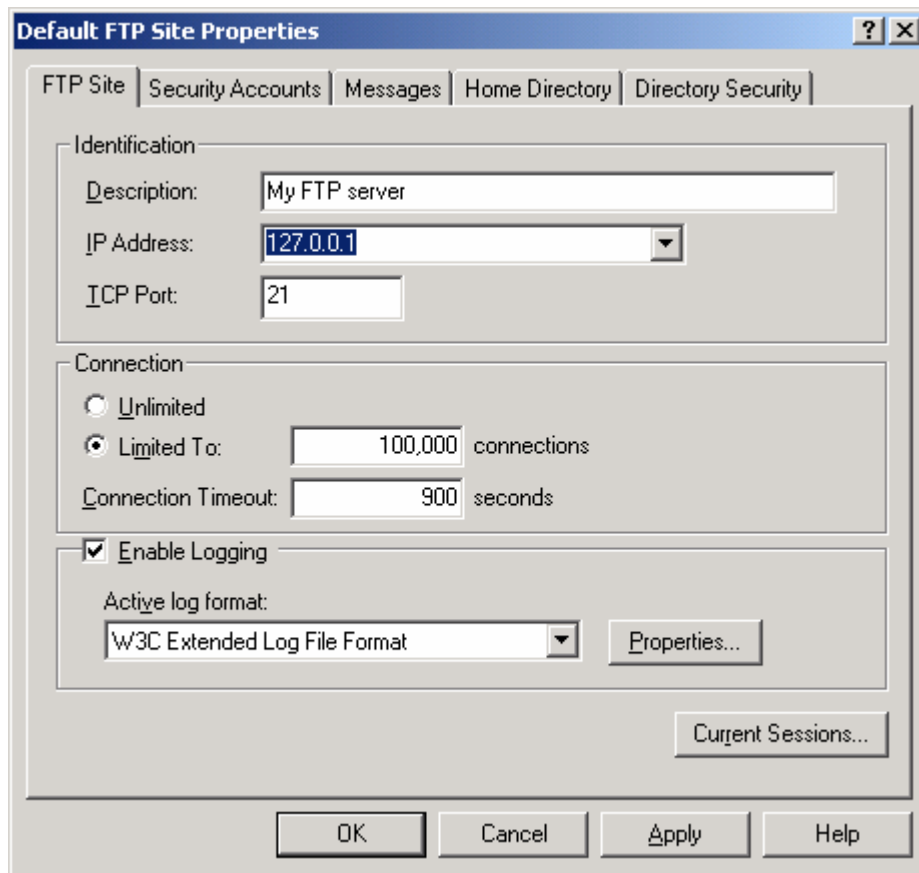


Figure 3: FTP Site properties page.

Next, select the **Security Accounts** tab. Here you can configure your FTP server to act as **Anonymous FTP** or **authenticated FTP** server. Anonymous FTP permit access to the FTP folder using **Anonymous** user name and mail address as password and the access is automatically granted. The account used is a built-in IUSR\_YOUR\_SERVER\_NAME account. Authentication type means only authenticated user can access the FTP resources for downloading or uploading. In this lesson just set as shown below. We are going to set Anonymous FTP server, so no need user name or password. You can add other **FTP Site Operators**, the default is **Administrators** group.

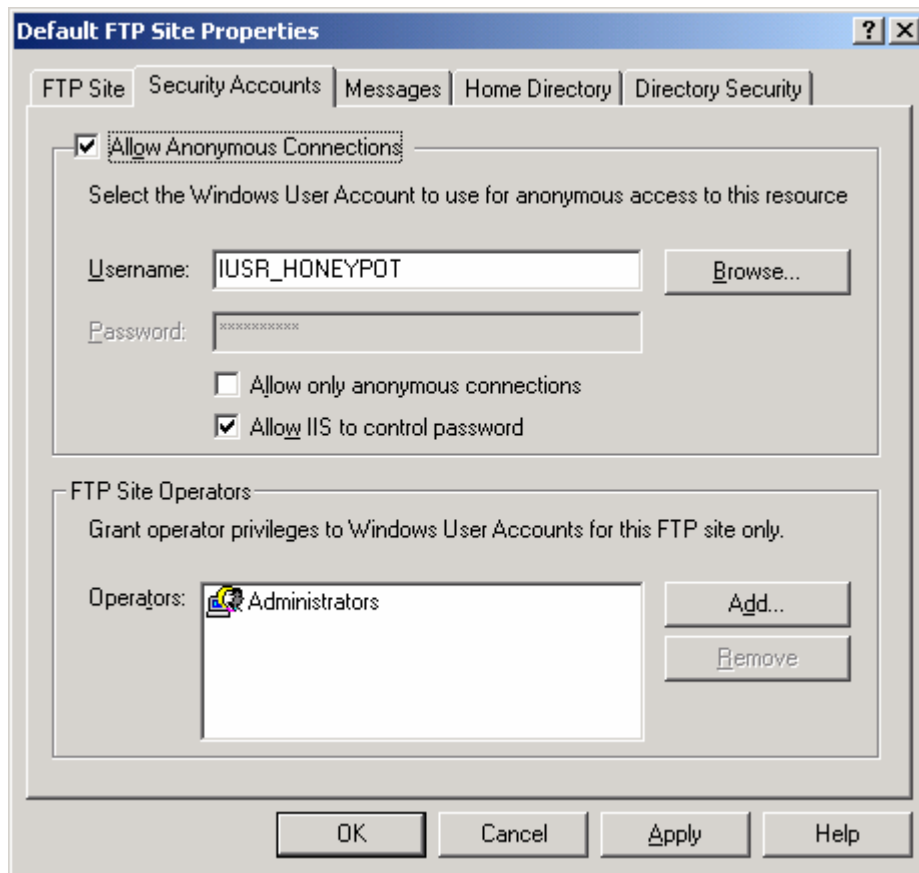


Figure 4: FTP Site's Security Accounts page.

Next, click the **Messages** tab. Here you can set the **Welcome** messages, **Exit** message and maximum concurrent connection. An example is shown below.

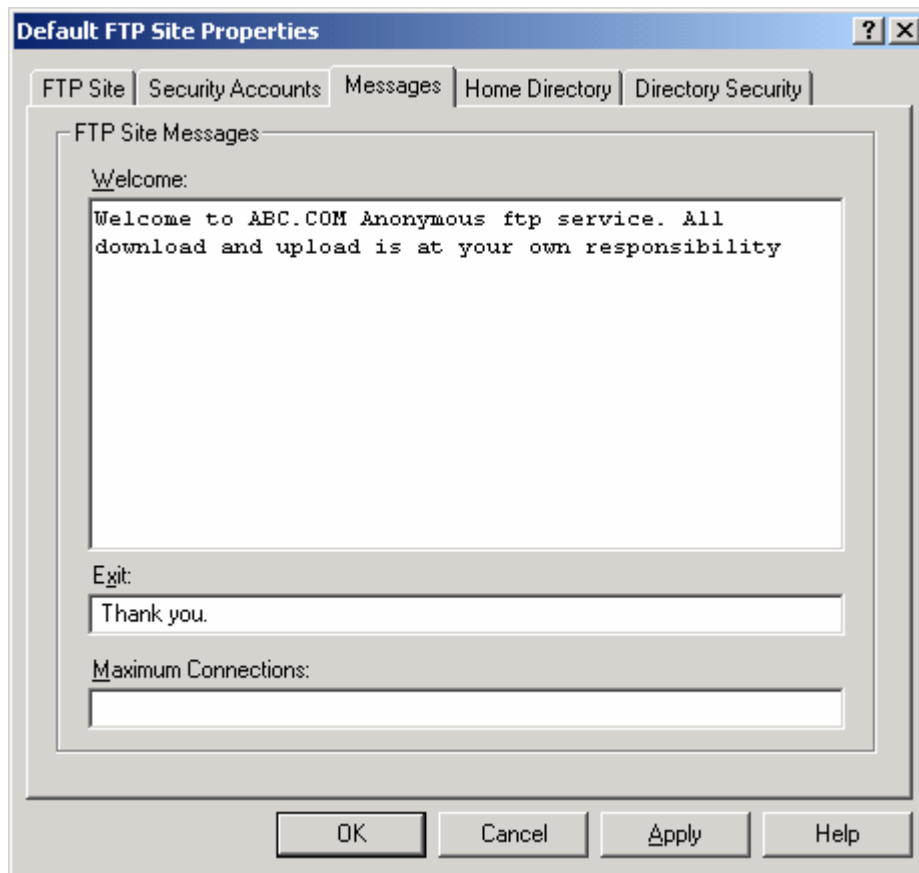


Figure 5: FTP Site's Messages page.

Next, click the **Home Directory** tab. Here you can set your home directory for your FTP service. The default is **c:\inetpub\ftproot** on local computer and you can also point to a shared directory on other computer. You can change to other directory whether local or remote by using the **Browse** button. In this lesson just use the default setting. Select the **Read** and **Log visits** tick box. It is clear here; if you provide the uploading service, select the **Write** tick box. Next, click the **Directory Security** tab.

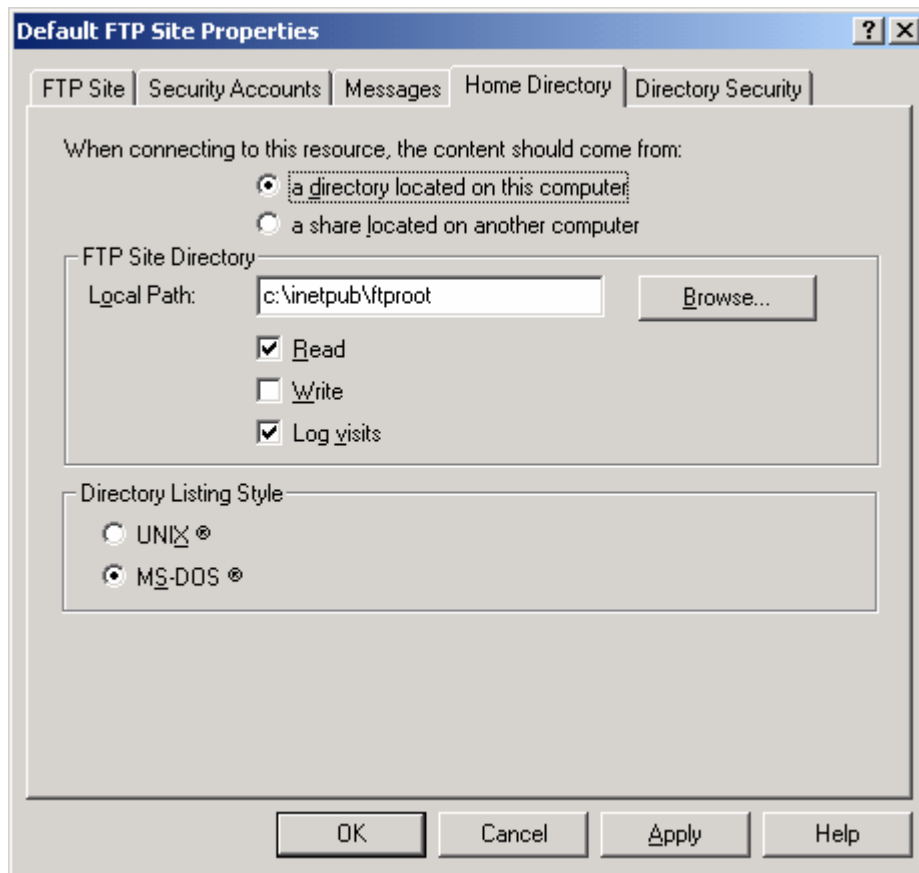


Figure 6: FTP Site's Home Directory page.

Here, you can grant and deny access based on the single client or a groups of client. In this lesson just grant all computer. Next click the **OK** button. Next, restart the FTP service or stop and start the service.

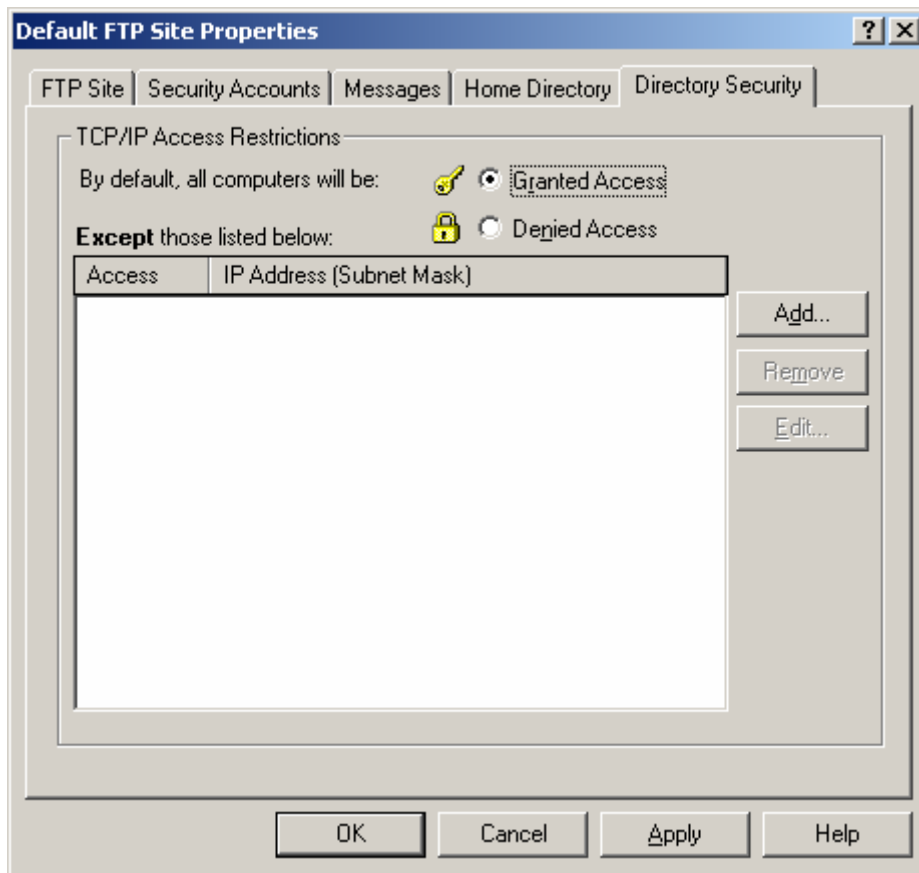


Figure 7: FTP Site's Directory Security page.

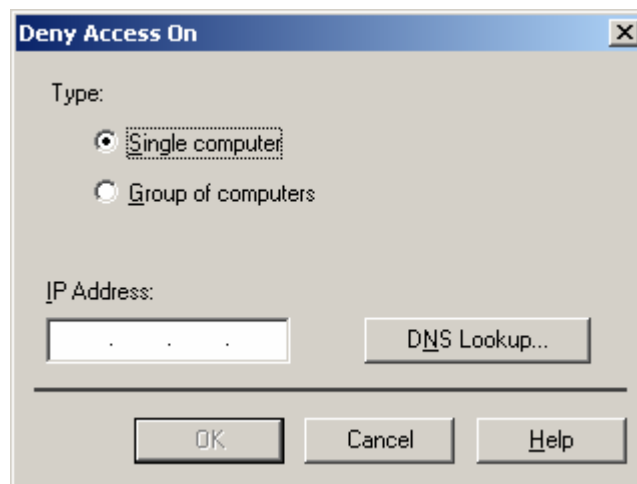


Figure 8: The FTP site restriction setting (blocking).

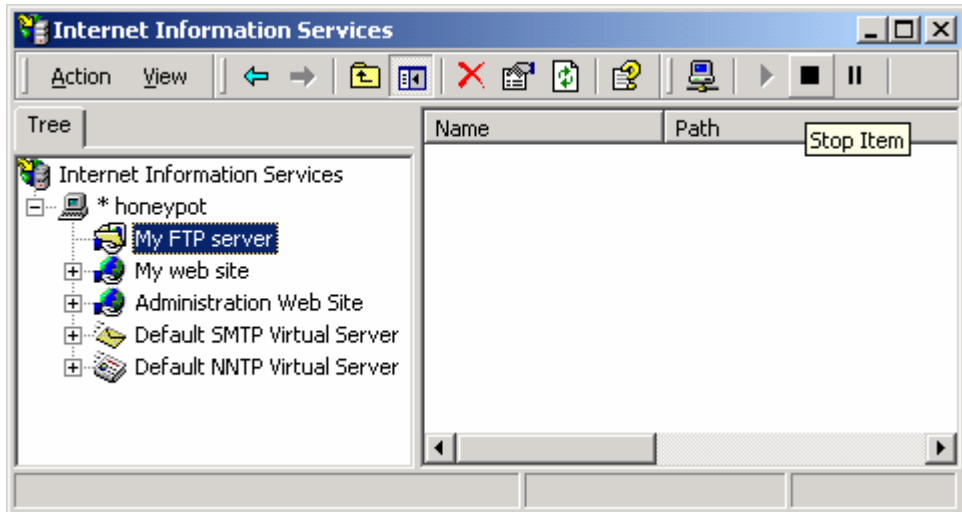


Figure 9: Restarting the FTP service.

Next we are going to test our FTP server. Before that, copy a folder as a sample downloadable data and put it in the **c:\inetpub\ftproot** folder.

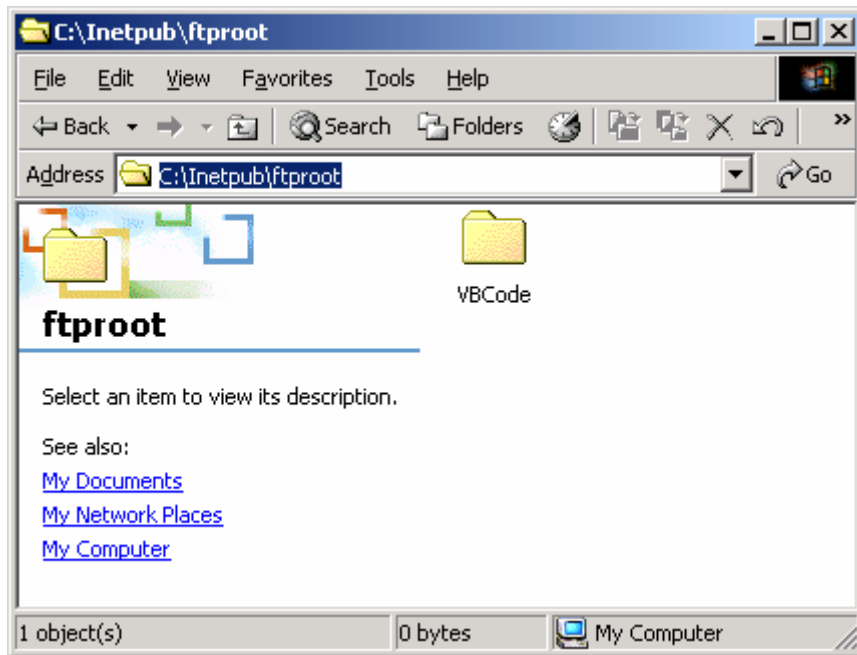


Figure 10: Copying a sample directory to the FTP directory for testing.

Then, launch the Internet browser and type the IP address and the port number (FQDN can be used if your DNS server is working and no need to put **:21** because we already setup the FTP to use the default port) as shown below in the address bar of the browser and press the **Enter** key.

`ftp://your_FTP_IP_address_or_FQDN/` or `ftp://localhost/` or `ftp://127.0.0.1/`



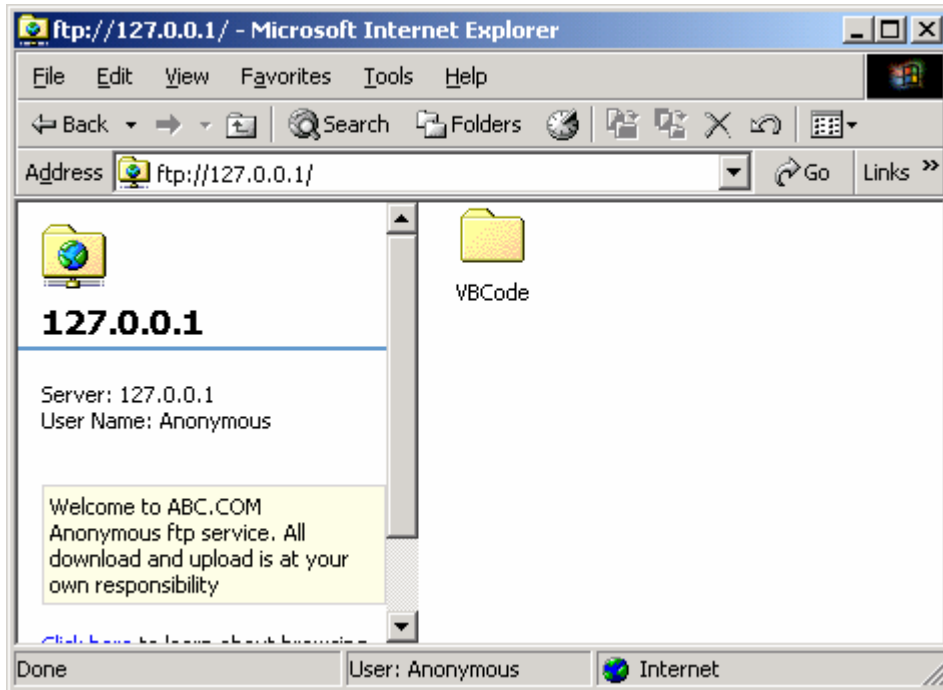


Figure 11: Accessing an Anonymous FTP server.

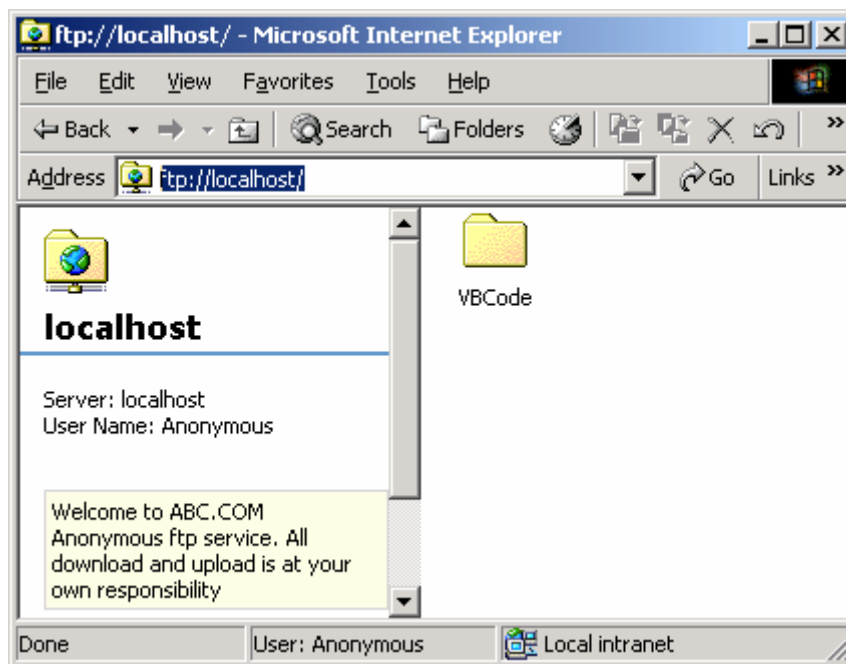


Figure 12: Using a ftp://localhost to access FTP server.

Let test the authenticated FTP user. Go back to the FTP property page and click the **Security Accounts** tab. Deselect the **Allow Anonymous Connections** tick box.

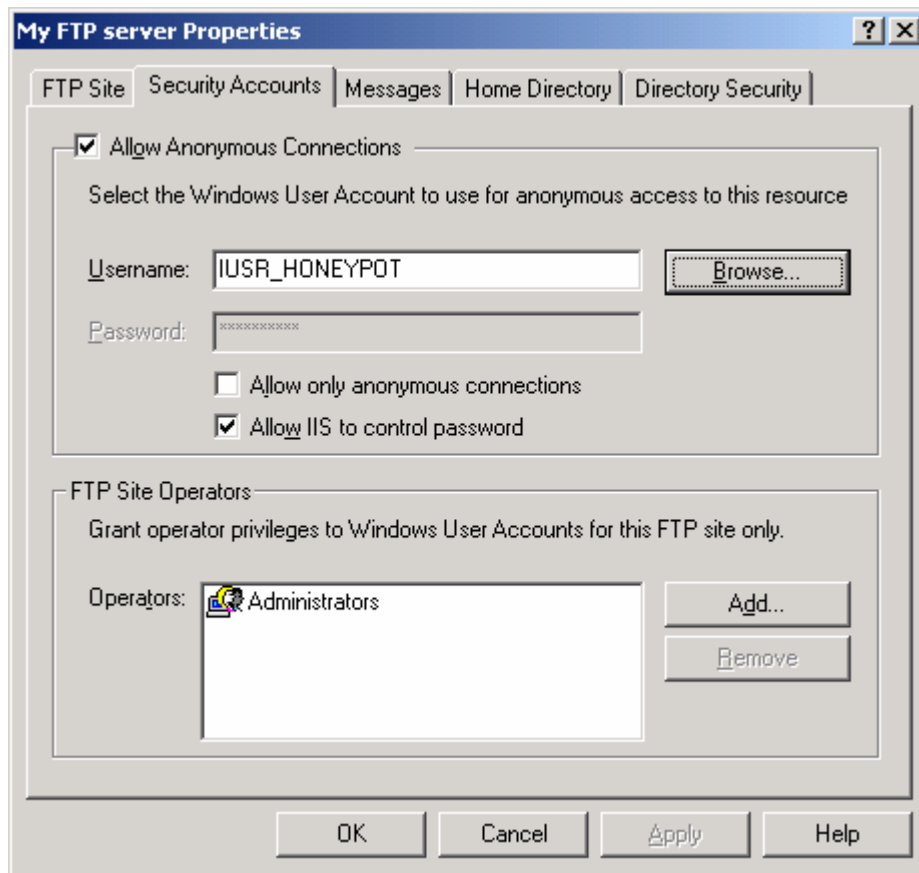


Figure 13: Setting the authenticated FTP access.

When the **Internet Service Manager** dialog prompt displayed, click the **Yes** button.

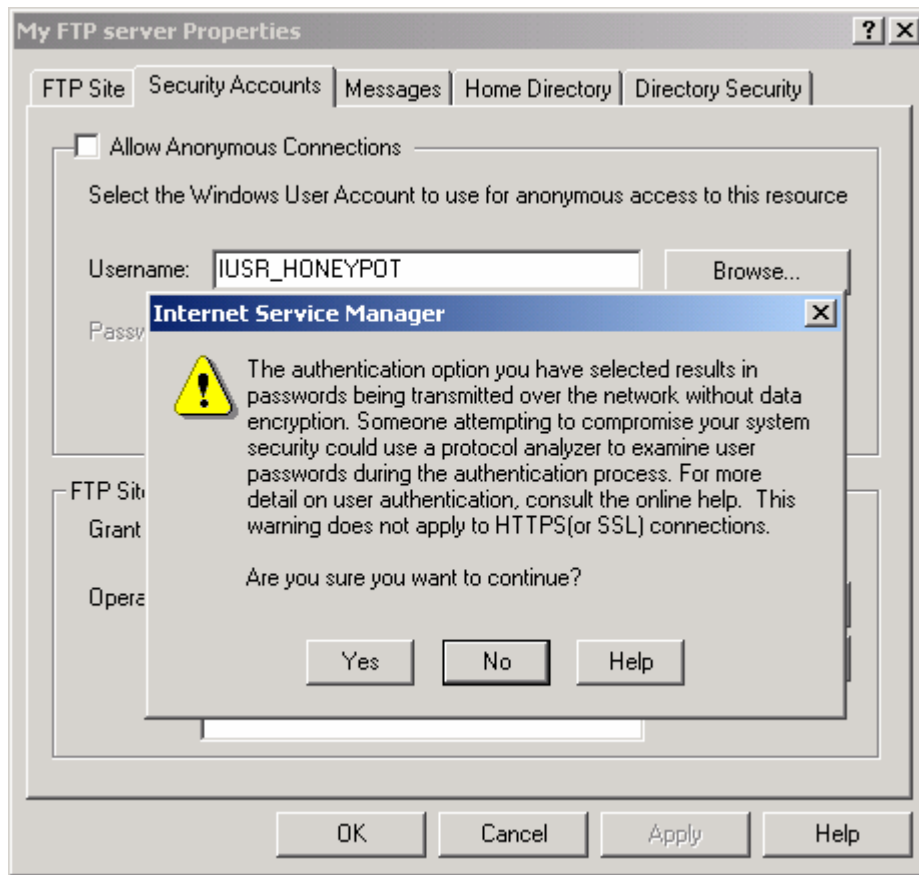


Figure 14: Dialog prompt for the unencrypted data transmission of the authenticated FTP access.

Click the **Browse** button and select **Administrator** account. In real case, you should create and account just for the FTP access, do not use Administrator or other built-in high privileges Windows accounts.

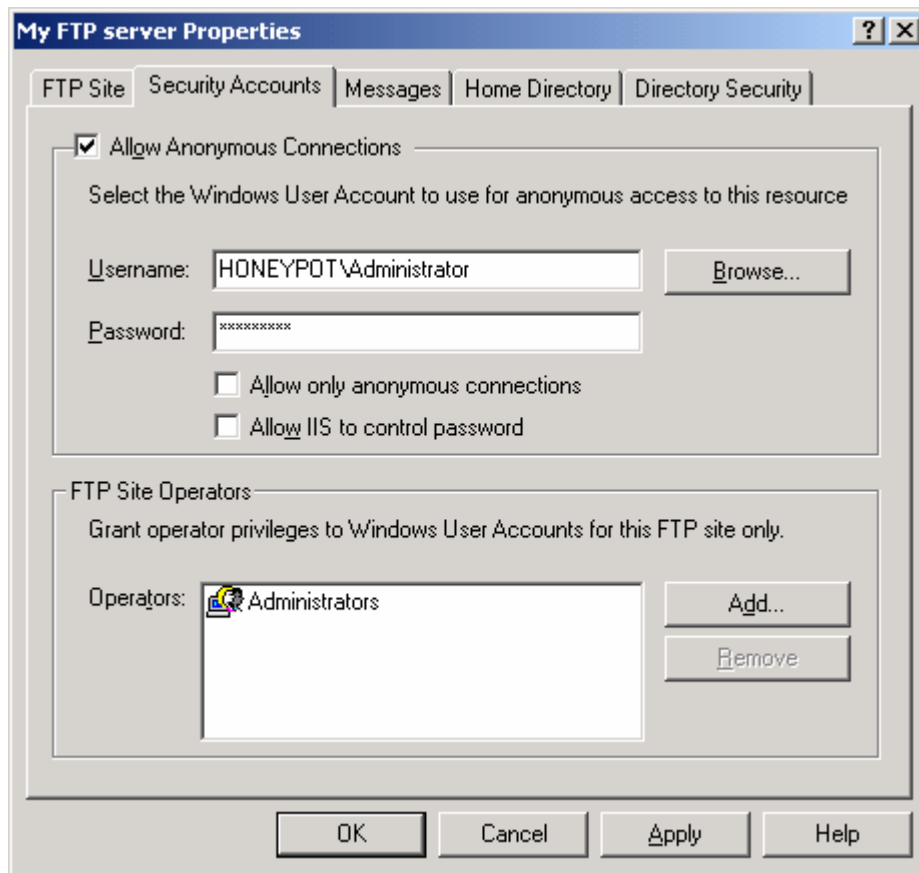


Figure 15: Selecting the Administrator user account for the FTP access.

If required, deselect again the **Allow Anonymous Connections** tick box.

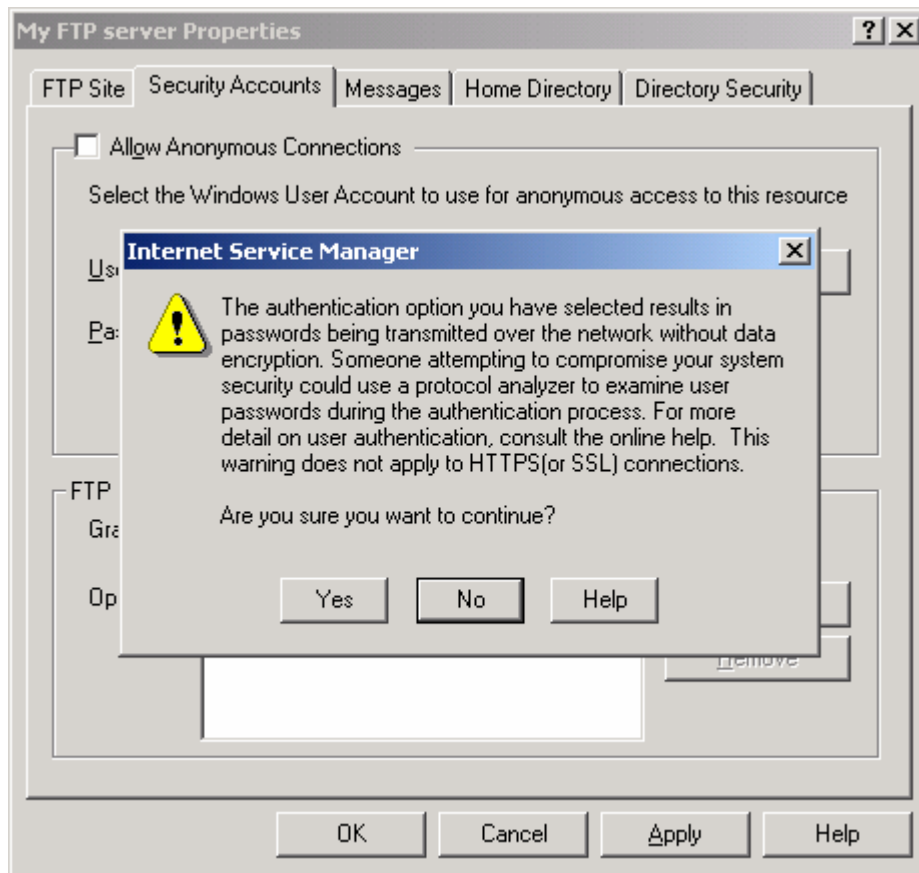


Figure 16: Dialog prompt for the unencrypted data transmission of the authenticated FTP access.

Try accessing your FTP server again; you should be welcome by the **Login As** window as shown below. Enter the **Administrator** account credential and click the **Login** button. Take note that, you may need to restart the FTP service because every time you change the FTP options, the FTP service must be restarted in order the changes take effect.

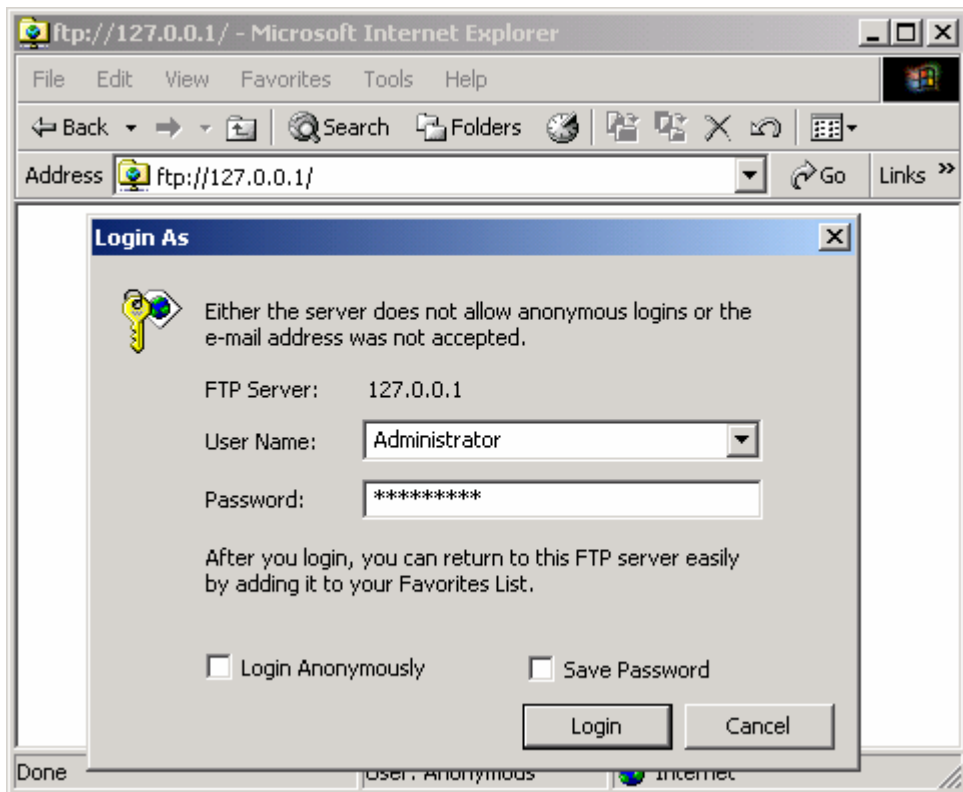


Figure 17: Accessing the FTP server that needs a username and password.

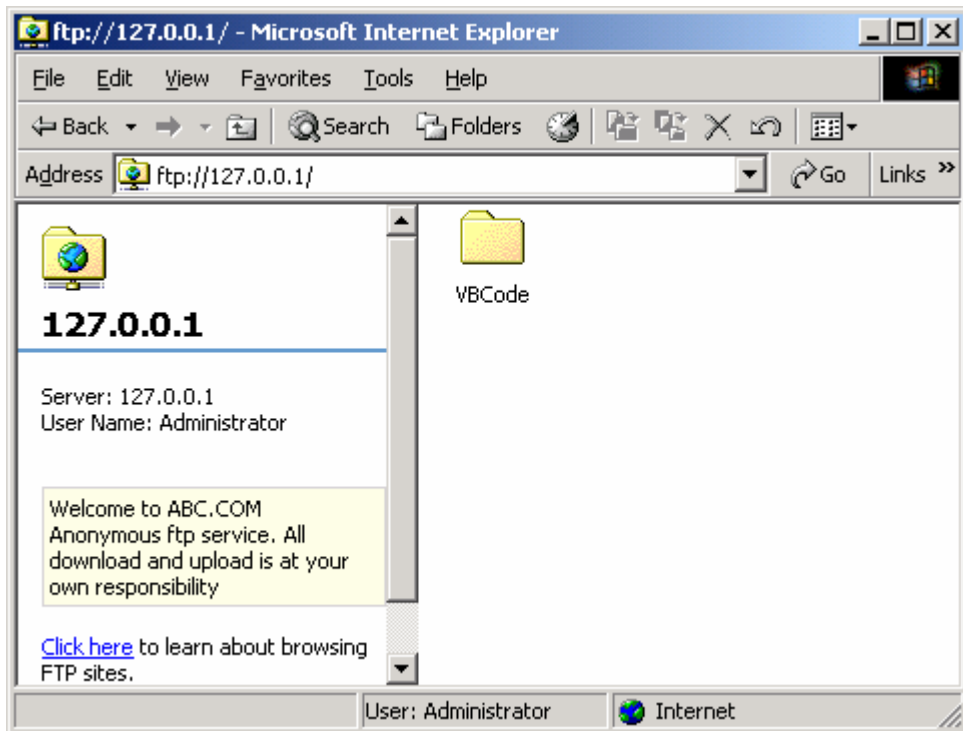


Figure 18: The authenticated access of FTP server.

-----End-----